



Webinar Series

Council for Accelerated Programs: Quality Standards

April 26, 2016

Logistics

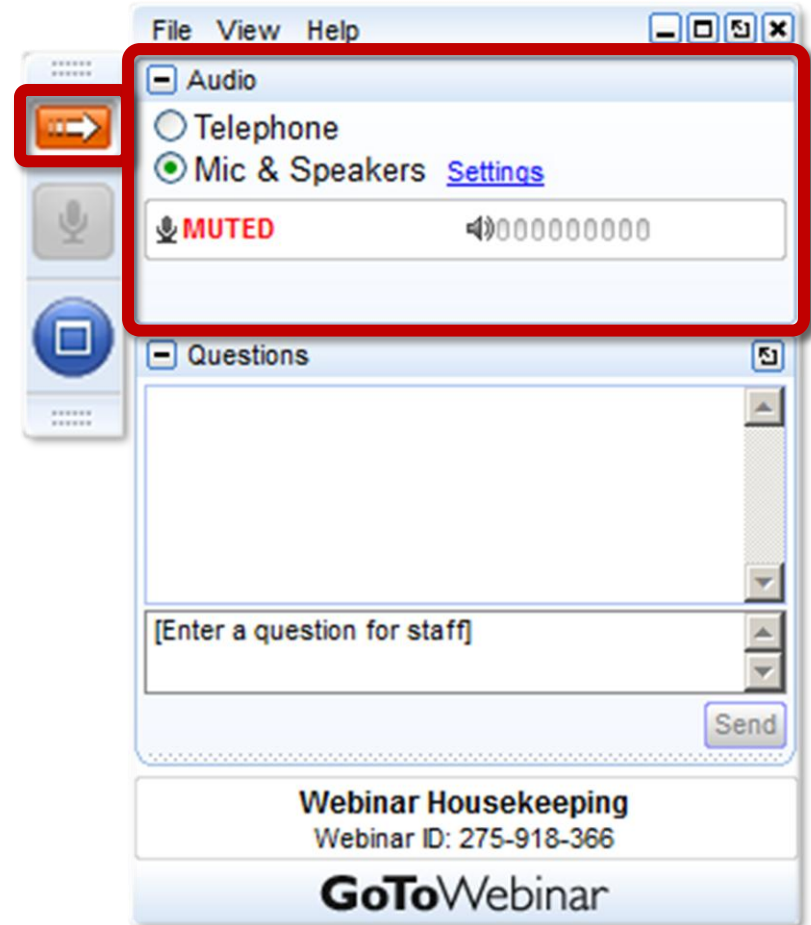
Your Participation

Open and close your **control panel** using the arrow in the orange box.

Join audio:

- Choose **Mic & Speakers** to use VoIP
- Choose **Telephone** and dial using the information provided

Note: All attendees will be muted.



Logistics

Your Participation

Submit **questions** via the Chat box.

Question will be addressed periodically throughout the webinar.

Logistics

After the Webinar

- A recording will be posted to our website www.adultcollegecompletion.org
 - Registered participants will receive an email notification when this is available.
- Brief evaluation

Adult College Completion Network

- Key commitment of Lumina Foundation

- Website:

www.adultcollegecompletion.org

- For additional information, contact Christina Sedney at csedney@wiche.edu

Connections

- Listserv
- In-person meetings

News & Research

- Website
- Twitter
- Blog

Resources

- Policy Briefs
- Webinars
- Shared resources

Quality Standards for Accelerated Programs



COUNCIL FOR
ACCELERATED PROGRAMS

Presenters:



Royce Ann Collins, Ph.D.
Associate Professor-Adult
Education
Kansas State University
Olathe, KS



Tom Castle, Ph.D.
Associate Provost
Mount Mercy University
Cedar Rapids, IA

Presenters



Tammy Stewart
Chair, Council for Accelerated
Programs
Client Services Manager,
Capital Education



Kevin Ezzell
Director, Accelerated &
Graduate Programs, Albright
College

Webinar Agenda

- Council for Accelerated Programs
- Nine Quality Standards
- Poll Questions

Council for Accelerated Programs

- Mission
 - Advocate for Accelerated Higher Education
 - Standards Creation
 - Research
 - Documentation
 - Best practices

Quality Standards



1. Program Mission and Integrity
2. Leadership and Administration
3. Educational Offerings
4. Assessment and Program Evaluation
5. Faculty Appraisal, Support and Appreciation
6. Student Services Support
7. Planning and Resources
8. Facilities and Auxiliary Services
9. Program Marketing and Recruitment

Program Mission and Integrity

- The program has a mission statement that reflects an educational philosophy, goals, purposes and general intent for its adult accelerated programs and clearly complements the institutional mission.

Program Mission and Integrity

MEASURES:

- Program mission congruent with institution's mission.
- Purpose and how will serve adult learners
- Values
- Focus on student learning and continuous improvement

Leadership and Administration

- The program's leadership and administrative structures are sufficient, appropriate and stable for accomplishing the program's mission. In addition, the institutional leaders demonstrate a commitment to, and embrace the concept of, accelerated adult learning models.

Leadership and Administration

MEASURES:

- University leadership
- Program leadership
 - Well-planned organizational structure
 - Adequate staff
 - Procedures to select, train, evaluate and develop staff
 - Knowledge and commitment to adult accelerated program's mission
 - Program leadership on institutional academic and administrative committees, boards, and other forums

Educational Offerings

- The degree programs offered are consistent with adult learning theory, the institution's mission, and student and stakeholder needs. They demonstrate academic rigor and congruence between learning objectives and outcomes. The program provides diverse learning experiences that incorporate the characteristics and contexts of adult learners while meeting established academic standards.

Educational Offerings

MEASURES:

- Program learning outcomes comparable to other institutional degree programs
- Facilitation
- Accommodate diversity, complexity of lifestyles, and time, frequency and delivery methods
- Build upon student's prior knowledge and experience
- Diversity of learning styles

Educational Offerings

MEASURES (cont.):

- Continuous improvement design
- Quality teaching, academic rigor and effectiveness
- Program goals and objectives (learning outcomes)
- Course guides and systematic review process
- Prior Learning Assessment options
- Adjustments made to suit the learning needs for specific course content

Assessment and Program Evaluation

- The program provides evidence of continuous assessment of its various components to ensure the maintenance of quality, the assurance of accountability, and the achievement of desired outcomes for its future development and improvement. In addition to the continuous assessment of learning outcomes, the program evaluates academic programs on a systemic basis, using longitudinal data, to ensure quality in all aspects of the program.

Assessment and Program Evaluation

MEASURES:

- Assessment plan
 - Document results and continuous improvement
 - Cycled into teaching, curriculum, and learning improvement
- Evaluation plan
 - retention, completion rates, post-graduate career advancement
 - Student satisfaction with facilities and auxiliary services
 - Demonstrate responsiveness

Faculty, Appraisal, Support, and Appreciation

- The accelerated program's curricula is developed, delivered, evaluated and facilitated by qualified, appropriately credentialed, professionals. The program's faculty share a commitment to serve diverse adult learners in an accelerated format and have the attitude, aptitudes, knowledge, and instructional skills to facilitate and assess the learning of these students.

Faculty, Appraisal, Support, and Appreciation

MEASURES:

- Documented system for hiring faculty
- Faculty composition reflection community's diversity
- Comprehensive orientation program
- Maintain faculty credentials
- Practical experience
- Faculty evaluation process
- Technology assistance provided
- Faculty development system
- Recognition of outstanding faculty

Student Support Services

- Reflective of the institutional and programmatic mission, the program provides student support services appropriate to adult student strengths and needs, which are readily accessible regardless of place or delivery format.

Student Support Services

MEASURES:

- Admission policies
- Academic support services
- Student administrative services
- All services available regardless of location or delivery method
- Consider the conditions and circumstances of adult learners and promote success
- Access to policies, procedures, and practices

Planning and Resources

- The program conducts ongoing planning and resource allocation based on its mission and uses the results of its assessment activities for program renewal.

Planning and Resources

MEASURES:

- Strategic plan
- Program's plan integral component to institution's strategic plan
- Uses results from assessment and evaluation activities
- Maintain sufficient human, fiscal, and learning resources to support the program's mission, goals, strategic plan, innovation and growth

Facilities and Auxiliary Services

- Facilities and auxiliary services necessary for the successful achievement of the program's mission are readily accessible, available and responsive to program students, faculty and staff. This may include off-site locations, classrooms, bookstore, parking, security, safety, food services, library/media center, technology and housekeeping.

Facilities and Auxiliary Services

MEASURES:

- Adequate space and furnishings
- Appropriate classroom technology
- Adequate staff and resources to carry out the functions: bookstore, parking, security, safety, food services, library/media center, technology, and housekeeping

Program Marketing and Recruitment

- The program demonstrates knowledge of student and market needs to ensure the continuing relevance of education programs and services. Recruitment practices are within the standards identified by current legislation, accreditation, and regulatory guidance.

Program Marketing and Recruitment

MEASURES:

- Student-Centered
 - Monitors continuous changing needs of adult students
 - Monitors student satisfaction and demonstrate responsiveness
 - Recruitment transparent
 - Demonstrates value to prospective students and potential financial commitments
 - Staffing compensation follows federal regulations
 - Leadership exhibits proper controls to avoid high pressure tactics

Program Marketing and Recruitment

MEASURES:

- Market-Focused:
 - Continuous environmental scan
 - Monitors community and stakeholder satisfaction to assure alignment with market needs

Next Steps for Your Institution

- Review the standards and examine your own program.
- Opportunity for an external review by CAP.
 - Prepare a self-study report. Demonstrating how your institution meets these standards.
 - CAP Consultant can review your report and give feedback.
 - CAP Consultant(s) can come to your campus, speak to any groups, and review your systems.

Meeting the Standards

- Use for your Regional Accrediting Reviews.
- Program quality and academic rigor for adult learners in higher education.
- Today's participants will get an Quality Standards Review checklist emailed to them.
- To set up a review contact:
 - Royce Ann Collins (racollin@ksu.edu)
 - or
 - Jeannie McCarron (jmccaro@regis.edu)

Questions/Discussion



We hope you can join us!

**The 15th National Conference for Accelerated Programs
in Higher Education**

Austin, Texas: The City where Innovation and Tradition Unite

**CAP 2016:
Driving Innovative Practice Through Accelerated Learning**

HILTON AUSTIN AIRPORT

Pre-Conference Events: Tuesday, July 26th

Main Conference: July 27th & 28th

Please submit any additional questions about CAP or your accelerated program to: jmccarro@regis.edu and we'll be happy to respond.

Thank you for listening

For more information visit:

www.adultcollegecompletion.org